

QUAD CITIES

**Community Foundation** 

Generosity lives here.®

QC River Connections Grant  
Information Session

# WELCOME!

# WE'RE SO GLAD YOU'RE HERE

QC River Connections Grant Information Session

- Please mute your microphone
- Share your name, organization, and something you hope to learn today in the chat
- This session will be recorded and shared publicly later this week

# MEETING GUIDELINES

- We will pause throughout for questions – feel free to add them in the chat or use the raise hand feature
- Please mute your microphone if you're not speaking to minimize background noise



# WHO ARE WE?

## CLEAN RIVER ADVISORY COUNCIL

A partnership of the **Walton Family Foundation, Iman Consulting,** and the **Quad Cities Community Foundation** supporting inclusive community-based efforts to protect—and connect people to—our Mississippi River, centering people and communities of color and others that have been excluded in developing solutions to effect positive environmental change.

To do this, we have brought together a diverse group of 11 community members to oversee the development of this grant program and a clean river vision, the **Clean River Advisory Council.**





# WHO ARE WE? YOUR QCCF GRANTMAKING TEAM



Kaleigh Trammell  
Grantmaking  
Specialist



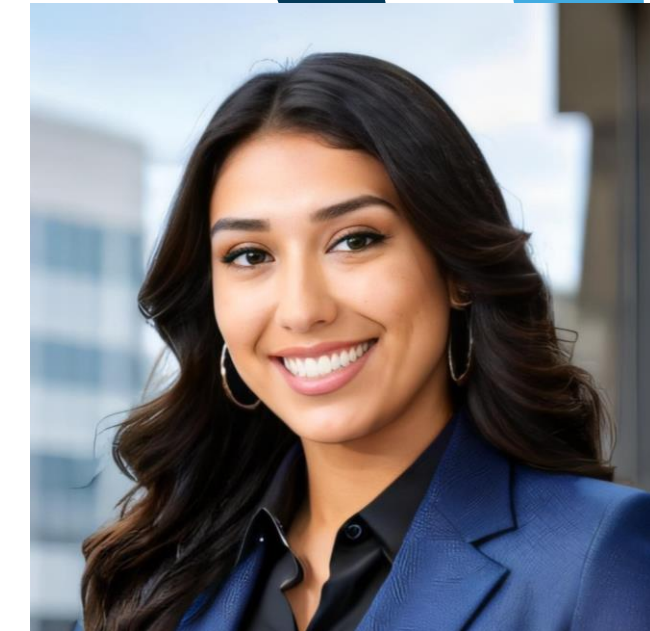
Kelly Thompson  
VP of Grantmaking &  
Community Initiatives



Steve Gottcent  
Grantmaking  
Specialist



Jennie White  
Grantmaking Assistant

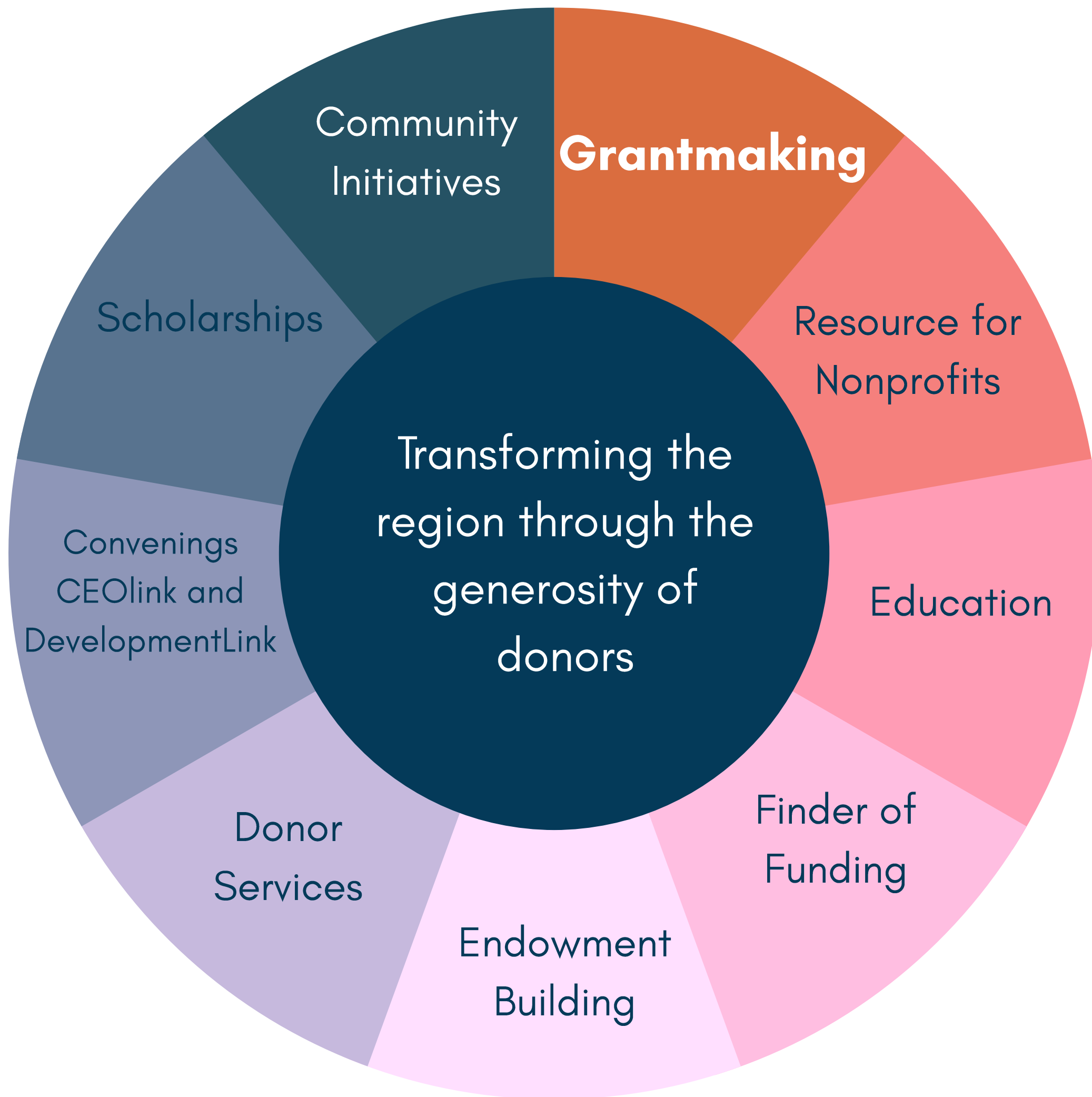


Daisy Moran  
Director, Center for  
Nonprofit Excellence

# GROUP AGREEMENTS

- Prioritize learning & community
- We're in this together!
- Cultivate open-mindedness
- Freedom to speak in first draft
- Feedback is welcomed
- Clear is kind

# POLL: HOW COMFORTABLE ARE YOU WRITING GRANTS?



# WHAT DOES THE QUAD CITIES COMMUNITY FOUNDATION DO?



# QC RIVER CONNECTIONS GRANT PROGRAM OVERVIEW

- Supports projects and organizations that **address environmental issues** facing the Mississippi River in the Quad Cities area.
- Supports efforts that **build and strengthen relationships** among people, organizations, communities, and the river.
- **Prioritizes underrepresented groups in the environmental sector**, including communities of color and low-income communities, as well as people, neighborhoods, and communities most affected by environmental issues facing the Mississippi River but have the least access to resources

# DOES MY ORGANIZATION QUALIFY FOR THIS GRANT?

## Organizations must:

- Provide a **charitable community benefit**
- Be located in or primarily serve **Scott County, IL or Rock Island County, IA**
- Agree to follow the **QCCF Diversity and Non-Discrimination Policy**
- Have an **environmental benefit** to the Mississippi River or the waters that flow into it
- Must **intentionally include and center** communities of color, low-income communities, or other **people disproportionately impacted by environmental issues** facing the Mississippi River.

# COULD YOU LIST SOME EXAMPLES?

- **Clean up, restoration, and conservation** projects
- **Education programs** on environmental issues, green careers, or our community's varied cultural experiences of the river
- **Youth-driven, volunteer, or community engagement** projects that relate to the river
- Projects that encourage and support people to **safely and inclusively access the Mississippi River** for recreation, healing, tourism, and more
- Strengthening the **ability of environmental organizations to do their work equitably**
- Strengthening the ability to do **environmental work of organizations or groups who represent communities of color, low-income communities, or other people who are disproportionately impacted by environmental issues** facing the Mississippi River.
- Strengthening the **ability of environmental and community groups to build relationships** and meaningfully work together

# WHAT IF MY IDEA ISN'T ON THIS LIST?

- These are just a few examples to get you thinking – definitely not a complete list of all the possibilities.
- If you have an idea that isn't listed here – please apply!
- If you're not sure if your idea is a good fit – please call us and we would be happy to talk with you!



# HOW DO I APPLY?

**Step 1:** Determine whether your organization/program qualifies for the grant

**Step 2:** Logon/login to our online grant system

*Don't have reliable computer access? Call us and we can help.*

**Step 3:** Submit application by October 31

- 
- If you have any questions along the way - we are happy to help!
  - We will even read a draft of your application, if you want.
  - You will know whether or not you received the grant by December 1

# HOW MUCH CAN MY ORGANIZATION APPLY FOR?

- Each organization can submit **one application**
- Between **\$1000 and \$50,000**
- Awarded for **one year**

We will grant  
a total of  
\$250,000!

# WHAT IF WE HAVE MORE THAN ONE PROJECT WE WANT TO DO?

- Maybe you have **several restoration projects** along the river and in the adjacent wetlands
- Or, maybe you have **several projects that support safe and inclusive river access**
- Include all of them in one application
- Make sure your project plan and budget is clear

---

**TIP:** If you're applying for multiple projects, it will be easier to provide a summary if there is a common thread among them.

# WHAT WILL I SEE ON THE FORM?


We ask for:

- **Organization Information**
- **Organization Leadership**
- **Project Information** – you have the option to add photos, documents, links or video
- **Project Budget**



# HOW WILL GRANT DECISIONS BE MADE?

- A group of members from the **Clean River Advisory Council** will read each application
- They will use set **evaluation criteria** to determine which applications will be funded



Some areas might be stronger for your application than others, and that's okay

# HOW WILL GRANT DECISIONS BE MADE?

**Relevance** Organization/project fits strongly within the purpose of the grant, benefiting the Mississippi River and centering communities of color, low-income communities, or other people disproportionately impacted by environmental issues facing the Mississippi River.

**Request** The grant will have a significant impact on the success of the funded project. Higher-scored applications may show that receiving the grant helps bring in more resources, makes the funded project more likely to be successful, or will let it happen sooner than it otherwise would.

**Impact** Project demonstrates that it will have a positive impact for the Mississippi River and the people, organizations, and communities involved. Higher-scored applications may show the potential for future benefits that will build on the funded project.

**Inclusion and Equity** Project makes our local environmental and conservation efforts more inclusive and equitable by intentionally centering communities of color, low-income communities, or other people disproportionately impacted by environmental issues facing the Mississippi River. Higher-scored applications will show leadership and planning involvement from these people and groups.

**Connections and Collaboration** Project builds or strengthens relationships between organizations, community groups, or people to benefit the Mississippi River. Higher-scored applications may show that the project will help form new or deepen existing, non-transactional relationships among groups who have not historically worked together.

# WHAT QUALITIES DOES A SUCCESSFUL APPLICATION HAVE?

# GRANTWRITING TIPS

- Take advantage of what already exists
- Use a second set of eyes!
- Make sure you answer all the questions being asked

---

What tips do you want to share?

What questions do you have?

What do you wish funders knew?



# BEFORE YOU GO...

Please fill out the survey by clicking the link in the chat – this helps us ensure that these sessions are as helpful and inclusive as possible!

# BEFORE YOU GO...

One more opportunity to connect:

## Cross Cultural Connection Workshops

Hosted by Iman Consulting

- Sept 26 from 5:30 – 7 pm
- Sept 27 from 4 – 5:30 pm
- Oct 10 from 5:30 – 7 pm

Space is limited and **RSVP is required!**  
Email **Anamaria Rocha** for more information  
at [anamaria@imanconsulting.com](mailto:anamaria@imanconsulting.com)

# THANK YOU!

Kaleigh Trammell  
Grantmaking Specialist

563-326-2840

[kaleightrammell@qcccommunityfoundation.org](mailto:kaleightrammell@qcccommunityfoundation.org)